

Upgrade CTU Modem from 2G to 4G

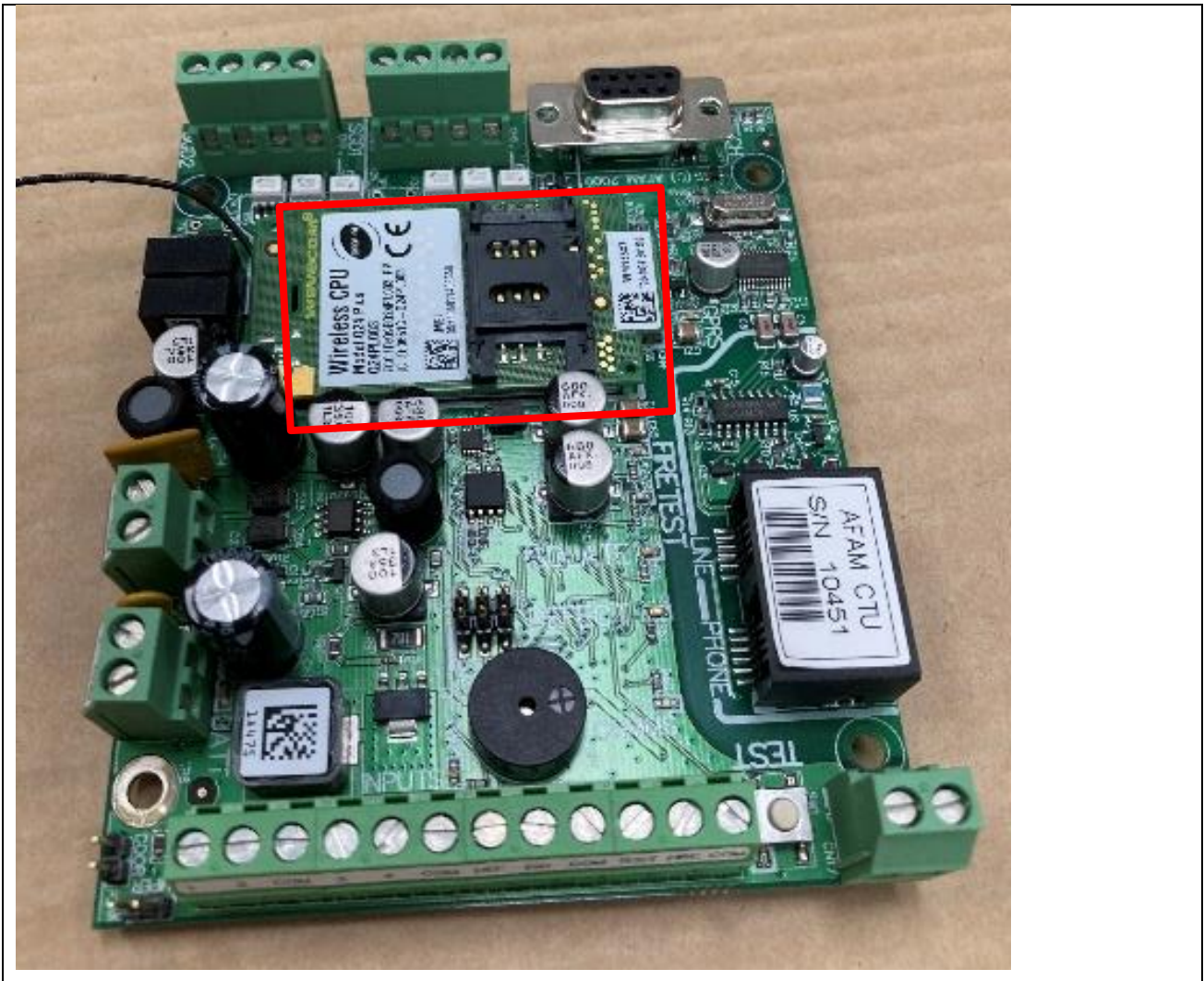
Daughter Board Installation

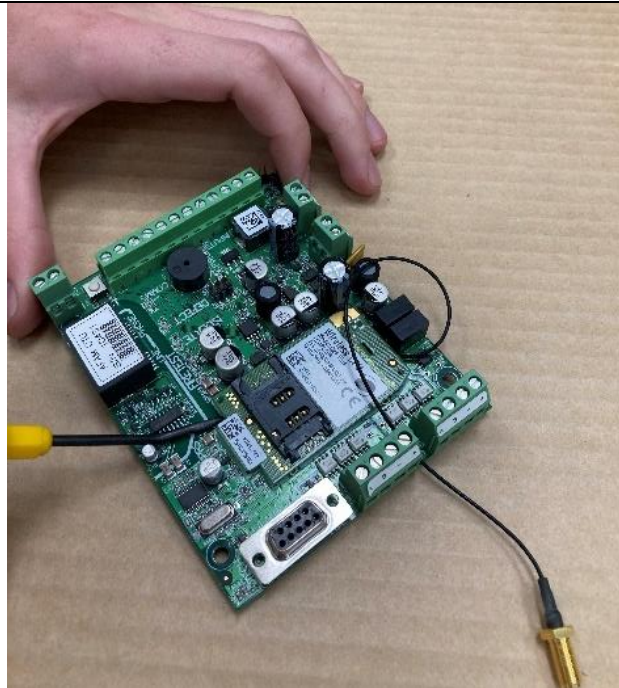
The purpose of this document is to provide instructions for removing the current 2G Modem and upgrading to a 4G Dual Sim Modem.

You will require the following tools/materials:-

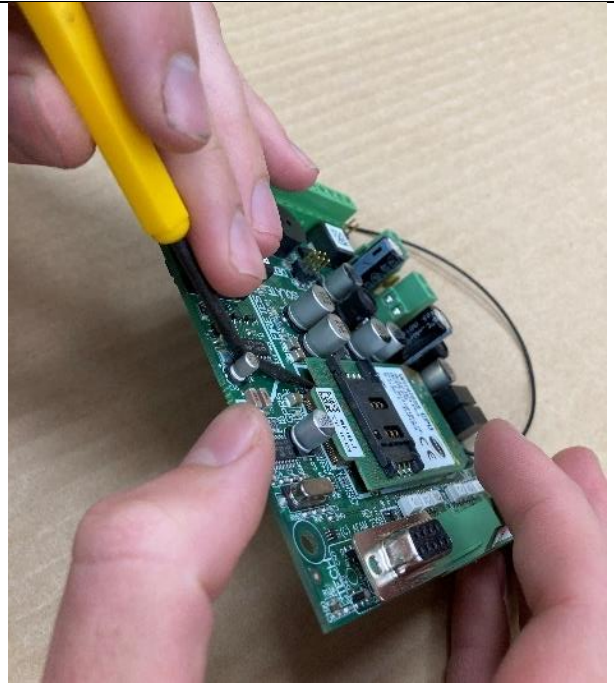
- Soldering Iron
- Solder
- Desoldering Stick or Soldering Braid
- Prying Tool (ie Screw Driver)
- Drill
- Drill Bit (approx. 1mm or less)

Removing the Existing 2G Modem

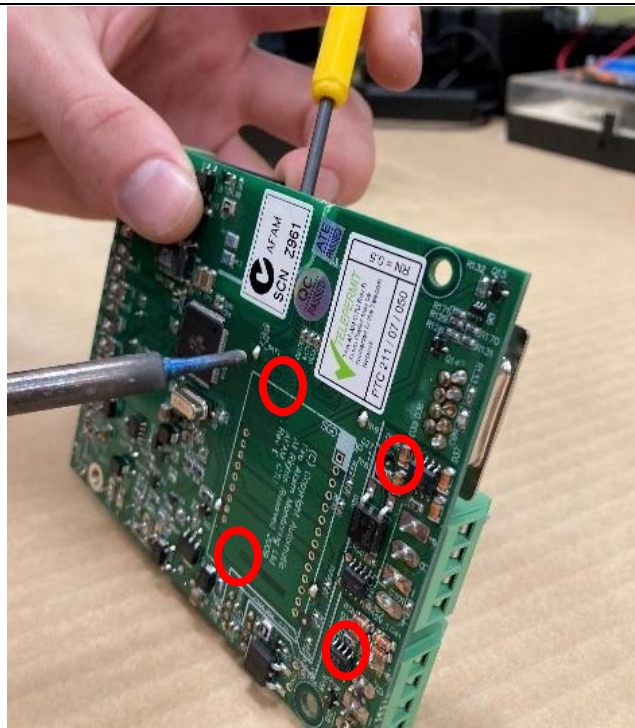




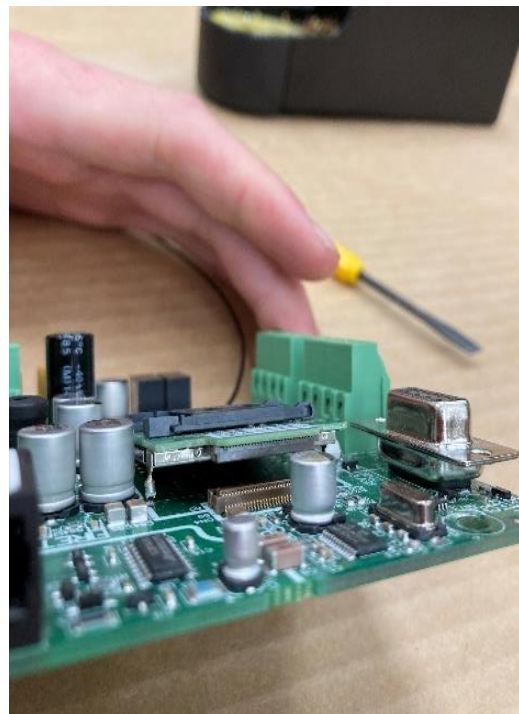
Locate pins holding modem in place, carefully maneuver a prying tool under the modem



Being careful not to damage any components or chips on the CTU, position the prying tool to get leverage under the modem

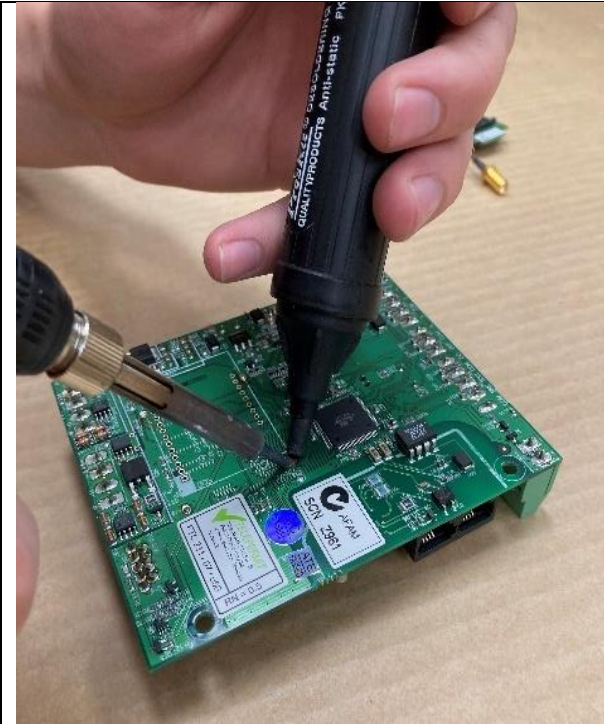


Use soldering iron to heat solder on top pins, lightly pressing against the modem with the prying tool to move it away from the CTU



Repeat on bottom pins, working around the modem until it detaches from CTU

Remove all remaining solder



Using a Desolder Stick, Solder Braid/Wick remove remaining solder.....

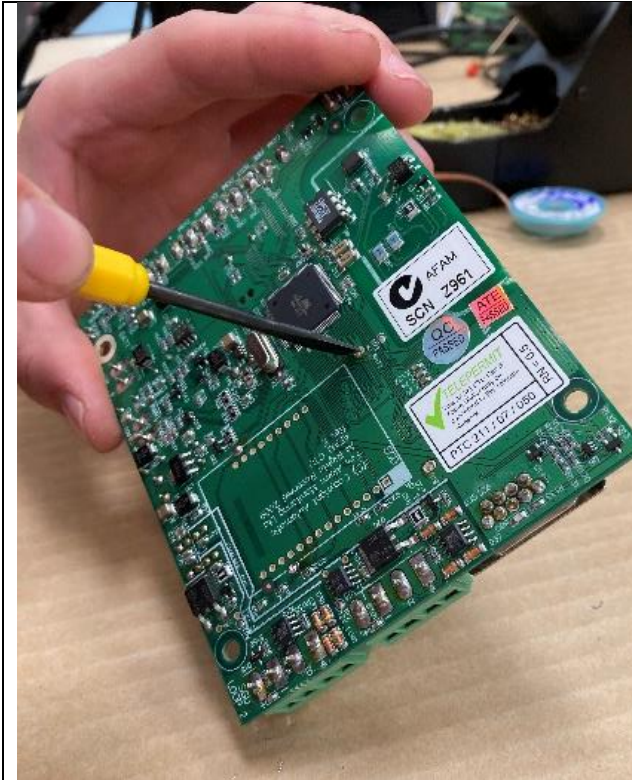


....or heat from one side, while using Desolder Stick on other to remove

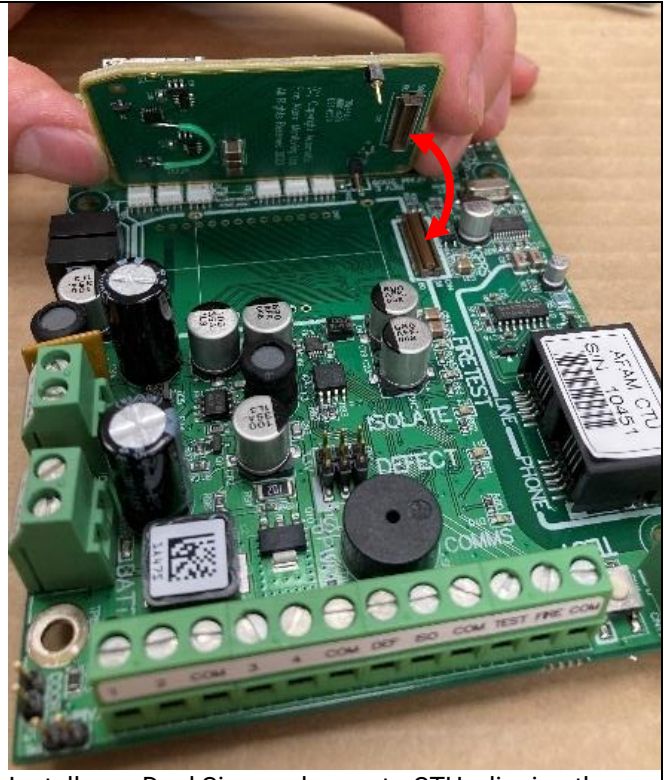


Finally, ensure the hole is completely clear of solder by using a drill.....

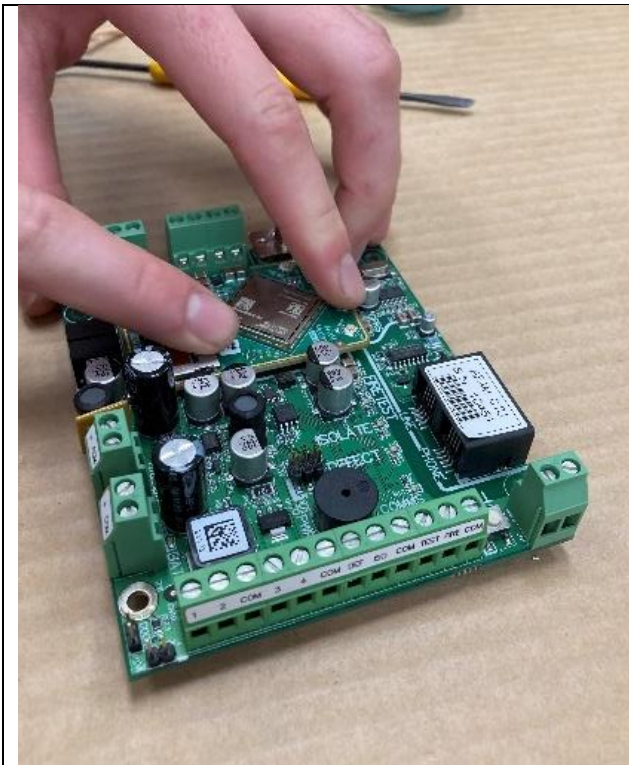
Install new 4G Dual Sim Modem



....or by using a small hand tool



Install new Dual Sim modem onto CTU, aligning the top connectors



Ensure you push down around the entire modem so both pins and the connector are making contact and flat



Solder both modem pins to the CTU Board